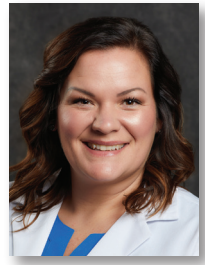


MARY HOLLIST, DO
Vascular Neurology



MELISSA LEE, MSN-FNP
Family Nurse Practitioner



**Memorial
Healthcare**

Institute for
Neuroscience

4680 McLeod East, Suite 2
Saginaw, MI, 48604

Ph: (989) 497-3140

Fax: (989) 270-1937

MemorialHealthcare.org

FROM THE NORTH:

Take I-75 to 675 South to Tittabawassee Road exit
Turn right onto Tittabawassee
Turn left on Town Centre Drive
Turn right on Commerce Drive
Turn left on McLeod Drive
We are the 2nd building on the left

FROM THE SOUTH:

Take I-75 to 675 North
Turn left onto Tittabawassee
Turn left on Town Centre Drive
Turn right on Commerce Drive
Turn left on McLeod Drive
We are the 2nd building on the left

FROM THE WEST:

Take Tittabawassee Road towards the Saginaw
Fashion Square Mall
Turn right onto Fashion Square Boulevard
Turn left onto McLeod Drive
Proceed to 4680 McLeod Drive East

FROM THE EAST:

Take M-81 to 675 North
Take Tittabawassee Road exit
Turn left onto Tittabawassee Road
Turn left onto Town Centre
Turn right onto Commerce Drive
Turn left onto McLeod Drive

